

Bay Window Roof Colony Extraction Penshurst, August 2020.



There were bees entering under the tiles at both ends of the Bay Window Roof and the owner (and builders!) wanted them removed prior to building work.



The owner had kindly removed the tiles beforehand, and here David is using the bee-vac [the converted poly nuc, on the RH end of the platform] to remove the bees.



This is the exposed brood nest, at the LH end of the roof.



There were a few sections of new clean honeycomb at the back of the colony, but most the comb looked like it had been established over many years.



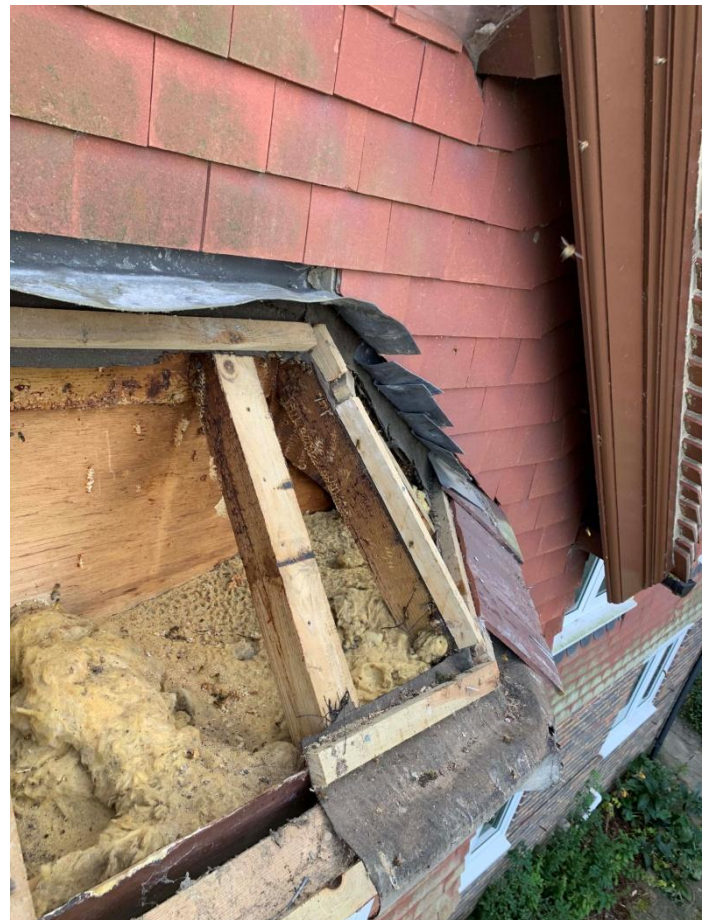
The 2nd section of the brood nest exposed at the LH end above the bay window. We believed the colony had absconded as a prime swarm ~2 months' earlier due to extensive wax moth infestation now visible.



This is the RH corner of the roof showing this 2nd colony still in residence.



This is the 2nd colony, at the RH end above the bay window.



Final picture showing the colony removed. We recommended, when the builders make good, they fill the cavities to prevent a new colony taking up residence!

Bay Window Colony Extraction.
David Turner & John Farrow 23.08.20